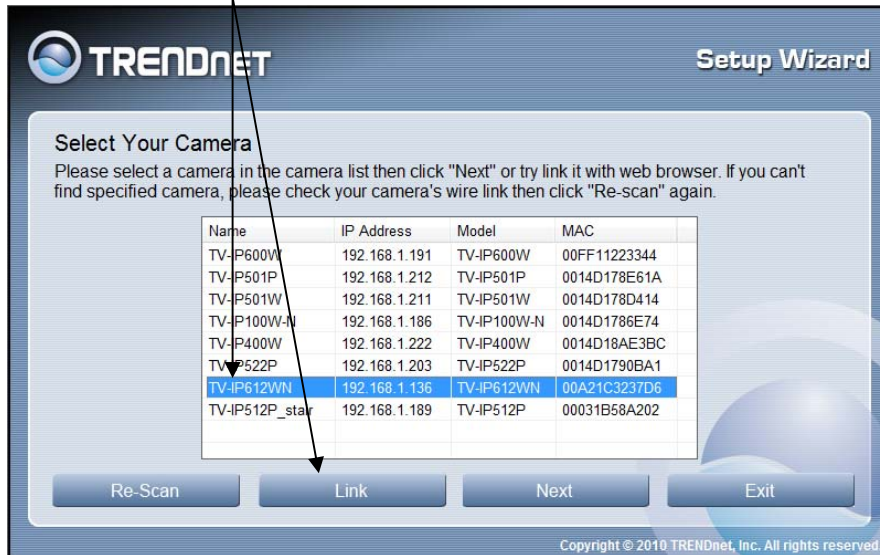
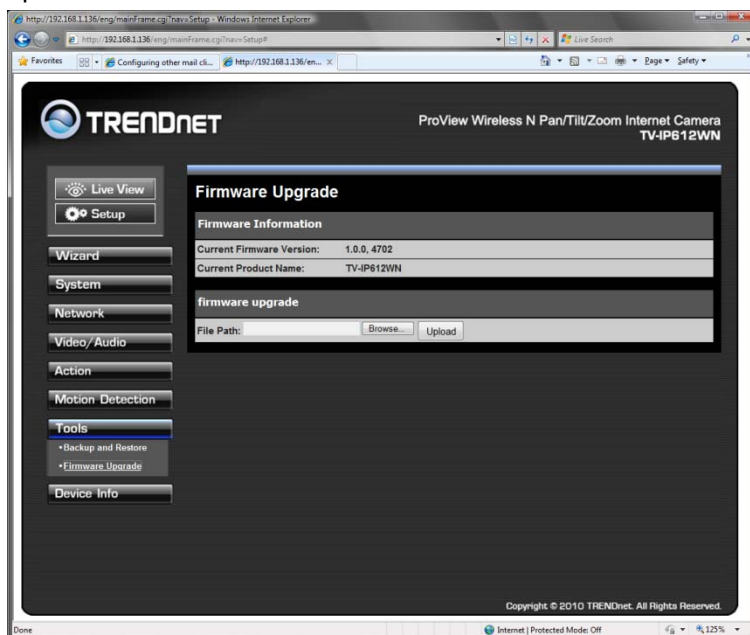


## Firmware Upgrade Procedures

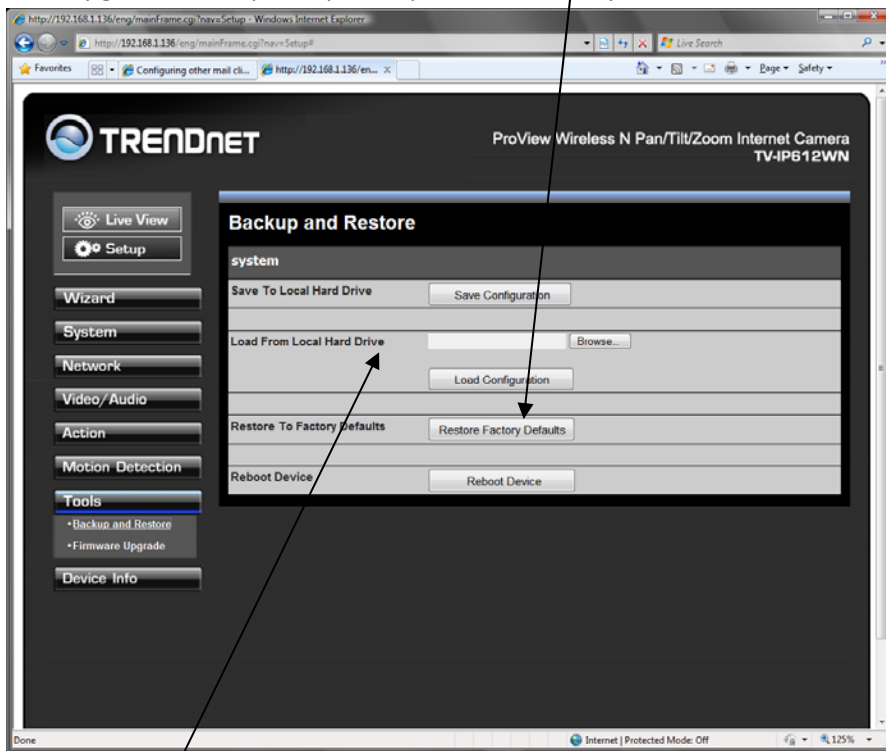
1. Go to camera's configuration page directly via browser or using Setup Wizard to link. Enter user name and password when prompted. (default admin/admin)



2. It is required to perform a factory reset procedure after loading the firmware to ensure the changes are taken correctly. Before doing so, it is recommend to save your settings by going to Tools/Backup and Restore section and click on **Save Configuration** and after firmware upgrade is loaded and unit is reset, go back to restore the saved configuration file (Load From Local HD).
3. Navigate to the System/Firmware Upgrade section and browse to the firmware file and click Upload.



4. After upgrade is complete, please perform a factory reset.



5. Load the previous settings if any.
6. Firmware upgrade complete.