



MCME Help



Introduction:

MCME is a File Explorer and package of utilities for Windows Media Center. The file explorer Media Center add-in allows you to explore files on your Media Center PC and execute them. For example you could use this feature to browse your Blu-ray and DVD ISO files and automatically mount them and load them into CyberLink PowerDVD.

MCME also includes a process explorer for listing all the running applications and processes on the Media PC and allows you to switch or terminate them. This is useful when you want to quickly switch from Media Center to a third party media player and back again.

Finally MCME includes an internet radio browser, powered by DI.FM and SKY.Fm. This allows you to choose from over 50 radio streams of all different categories and play them directly in Windows Media Center.

File Browser Features:

- Browse your PC files using the Media Center remote
- Execute both shortcuts and files inside and outside Media Center
- Configure what files and folders MCME can explore
- Set up favourite locations
- Configure MCME to show different files and folders for Extenders
- Configure MCME to minimise Media Center on opening an external file

Process Explorer Features:

- Browse any processes running on the Media Center
- Switch to applications that are currently open
- Automatically minimizes MCME on switching to another application
- Close and Terminate processes
- View memory usage of processes (physical and virtual)

Internet Radio Features:

- Browse over 50 internet radio streams from [SKY.FM](#) and [DI.FM](#)
- Play the radio stream directly in Media Center
- Play the radio stream on your Media Center Extender
- Easily configurable to add more streams



System Requirements:

Windows Application

- OS: Windows Media Center 2005, Vista x86 Ultimate, Vista x86 Home Premium , Vista x64 Ultimate, Vista x64 Home Premium, Windows 7
- CPU: Minimum 2Ghz Pentium 4
- Memory: Minimum 512 Mb
- Hard Disk Space: 1Gb
- ..NET 3.0 framework or above

Media Center Application

- OS: Windows Media Center 2005, Vista x86 Ultimate, Vista x86 Home Premium , Vista x64 Ultimate, Vista x64 Home Premium
- CPU: Minimum 1Ghz Pentium 4
- Memory: Minimum 256 Mb
- Hard Disk Space: 1Mb



Installation:

Installing MCME is very straight forward. However you must first select the correct set up to run according to your system architecture. If you are running a 64 bit (x64) system then please install the x64 version of MCME. If you are running a 32 bit (x86) system then please install the x86 version of VME. If you are unsure what architecture you are running then you can try and install the x64 bit version. This will alert you if your system architecture is incorrect.

Once you have executed the MCME installation MSI you will be greeted with a simple wizard. Simply follow all the steps through the wizard to install the software. During the installation you will se a command prompt appear and disappear, this is simply installing the Media Center Add-ins.



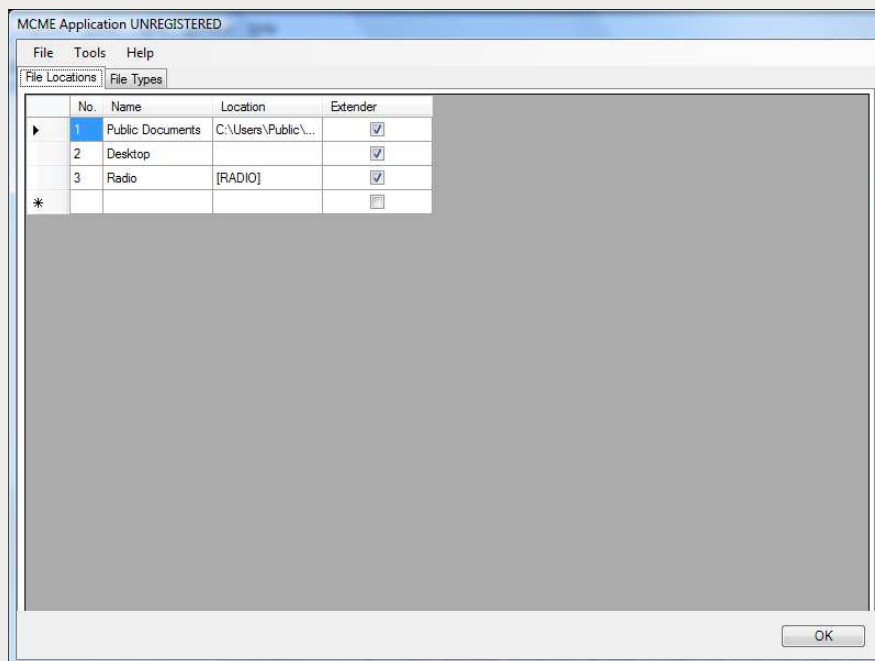
Using the Windows Application:

Once MCME is installed you will be provided with an MCME icon on your desktop and start menu. This icon runs the Windows application which must be running in the background for the Windows Media Center add-ins to function.

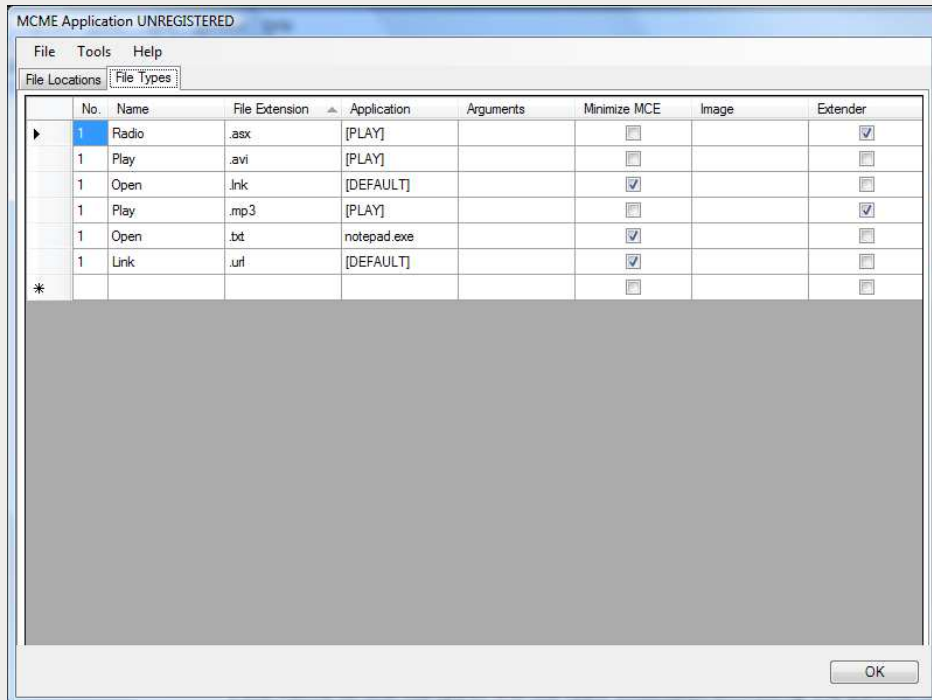
Once you have double clicked the MCME shortcut you will be greeted with an MCME icon in the system tray. You can double click this icon to open the configuration screens.



When MCME opens you will see two different configuration tabs. The first one allows you to configure favourite locations available to browse. Simply enter the name of the location, the location (double click on this field to get a folder browse or type the folder path in) and whether it is available on the Media Center Extender. You can set the Number field to indicate the order the locations should be displayed.



The second tab allows you to configure the file types/extensions that you can browse for. In the grid simply enter the name of the file type, the file type extension (including the period/full stop before the extension), the application to execute when the file type is selected (double click on this field to get a file browse), any arguments that should be included when executing the application, whether to minimize Media Center on execution (not available from a Media Center Extender), the image for the file type (most common file types will default the image for and more images can be located in the installation directory/html/images folder) and whether the file type is available on an extender.



You will see from the screenshots that there is a use of [] variables such as [RADIO] and [DEFAULT]. Basically in the locations tab you can enter [RADIO] to tell MCME to browse for the MCME radio directory. In the file types tab you can use the following variables in the Application field:

- [PLAY] – play the file in Windows Media Center
- [OPEN] – Open the file in Windows Media Center (only useful for other Media Center applications, URL shortcuts or Internet files)
- [DEFAULT] – Open the default application assigned in Windows

In the file types tab you can also enter the same file type multiple times with different Names. This will then cause the Media Center interface to prompt you for the application you wish to use. You can set the Number field according to the order the file types should be displayed.



Using the Windows Media Center Application:

Once you have configured MCME you can open Windows Media Center. You will see a new "Lightning Ware" start item with the four MCME functions. The applications should also be available through "More Programs".



First select the MCME Browser application. This will open up MCME showing your locations on the left and any files as icons in the middle. You can use the Media Center remote to navigate this interface. Once you have found a file to execute, simply click the file or select it with the remote and MCME will use the application settings to execute the correct application.



Next select the Minimize application. This will simply minimise the Media Center. You can click the Media Center start button at any point while Media Center is minimized to restore Media Center.

The next application, MCME Radio, has a similar look to the File Browser and shows you Radio Streams from DI.FM and SKY.FM categorised into folders. As with the file browser use the Media Center remote to navigate the radio streams and select the one you want to play it in Media Center.

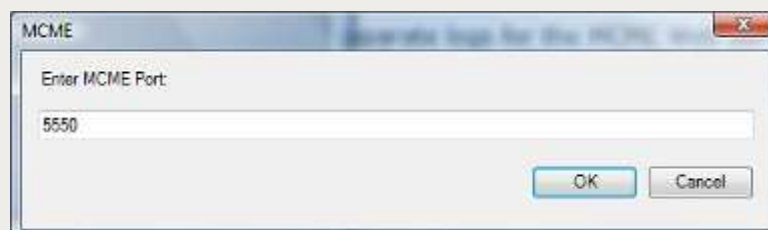


The final application, Processes, again has a similar look to the file Browser and shows you a list of open applications and processes on the PC. The applications that can be switched to or closed are shown first in the list followed by system processes that can only be terminated. Clicking an application will prompt for switch or close and then when switch is selected Media Center will be minimized and the application brought to the front.



Changing The Server Port:

By default MCME uses port 5550 to listen to Media Center requests. If this port classes with another application or you wish to change it you can edit the port number by selecting "Set Port" from the tools menu in the Windows Application.



Please be aware that after a port change you will need to uninstall and reinstall the Windows Media Center Add ins. This can be done using the items in the "Media Center" menu under the "Tools" menu.



MCME Advanced Features:

MCME has many features for power users, which include the web server and logging.

When the MCME application is started it will open port 5550 and use this port as its web server communication port. To change this port please see the section below.

Please do not expose the MCME port to the outside network. MCME has been designed to be used in a secure internal LAN and not on the internet.

You can access the web server by typing the address:

`http://[machinename]:[port]/[webpage]`

Where [machinename] is the name or IP address of the machine that VME is running on and the [port] is the port that MCME is using (default 5550). The [webpage] is any web page that exists in the MCME Program Folder/HTML folder (e.g. C:\Program Files\Lightning Ware Solutions\MCME\HTML). An example of accessing the default interface is:

<http://localhost:5550/default.html>

You can write your own web pages and place them in this folder and also create new interfaces for MCME using the existing files as a basis.

MCME includes a full logging system that creates two separate logs for the MCME Web Server and MCME Application. If you encounter a problem with MCME then I recommend you visit the logs and send me the section that includes the error you are experiencing. The logs are also written out to the MCME folder in the shared or public documents folder.

To access the logs select either "MCME Log..." or "Server Log..." from the "Tools" – "Logs" menu.