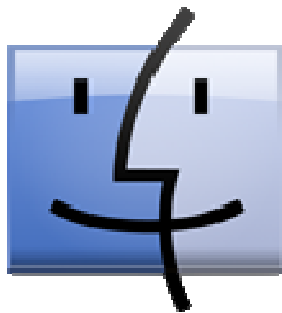


# DUPLICATE FILES SEARCHER FULL EDITION

version 2.2



USER GUIDE

<http://duplicatefilessearcher.net>

by

Rafał Frączek, Kraków 2009

## 1. What is Duplicate Files Searcher full edition?

Duplicate Files Searcher (DFS) is an application for finding and deleting duplicated files on your computer. It can also be used to calculate MD5 and SHA hashes.

## 2. How to install DFS?

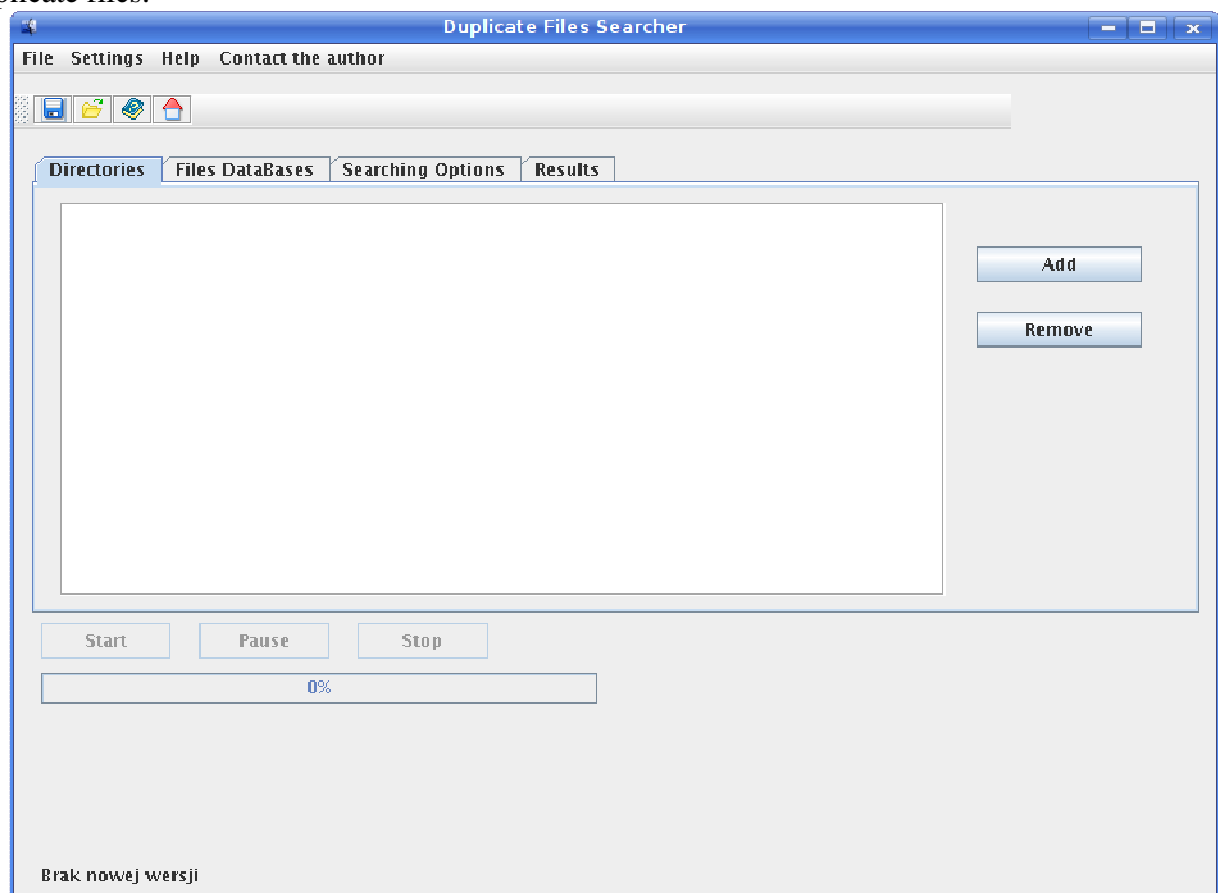
DFS does not require installation. Simply, create a new directory and then put **dfsfull.jar** in it.

## 3. How to run DFS?

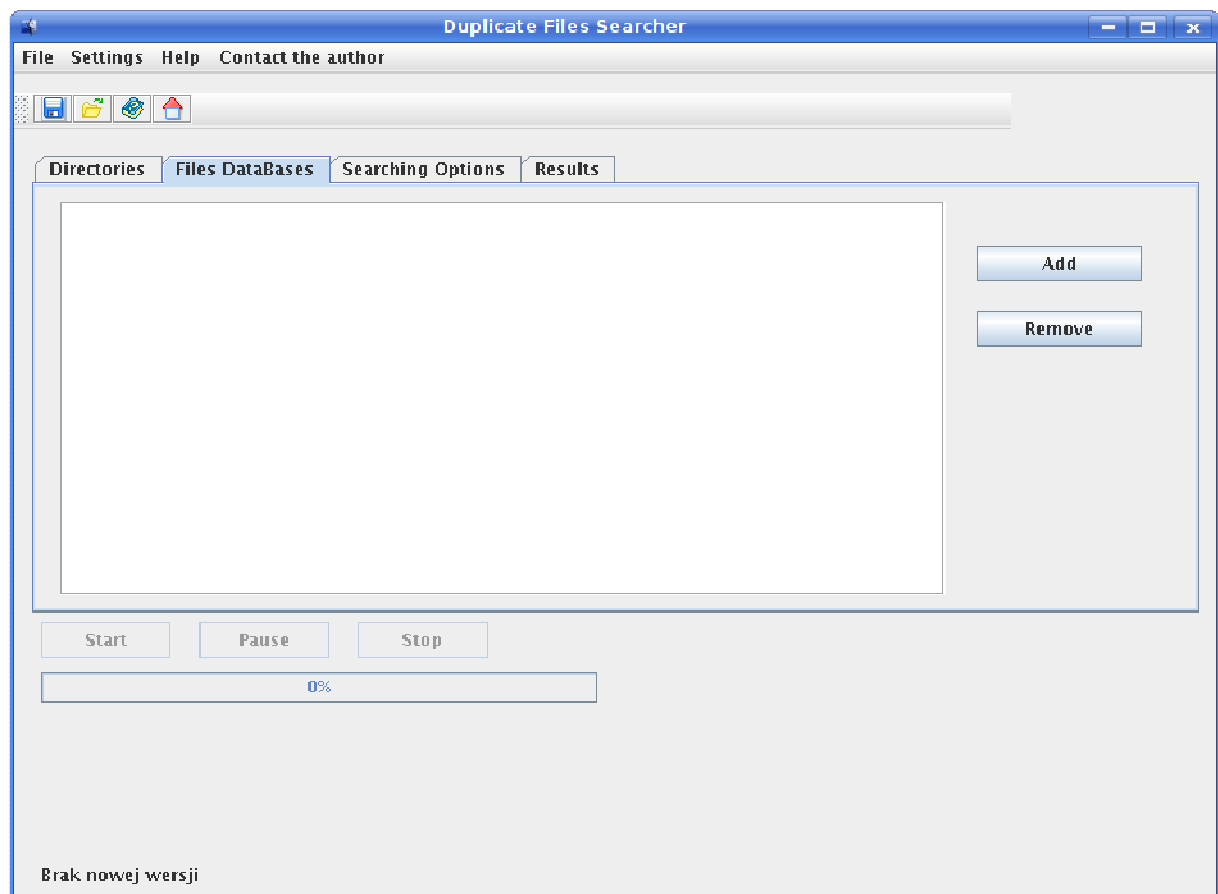
To run DFS you need to launch **dfsfull.jar**. Since DFS is entirely written in Java, it requires Java Runtime Environment Standard Edition (JRE SE) installed on your computer. If JRE is not installed, visit <http://java.sun.com/javase/downloads/index.jsp>, then download and install the appropriate package for your operating system. After that, you can launch DFS by double-clicking **dfsfull.jar** or by typing in a command line: `java -jar dfsfull.jar`.

## 4. How to use DFS?

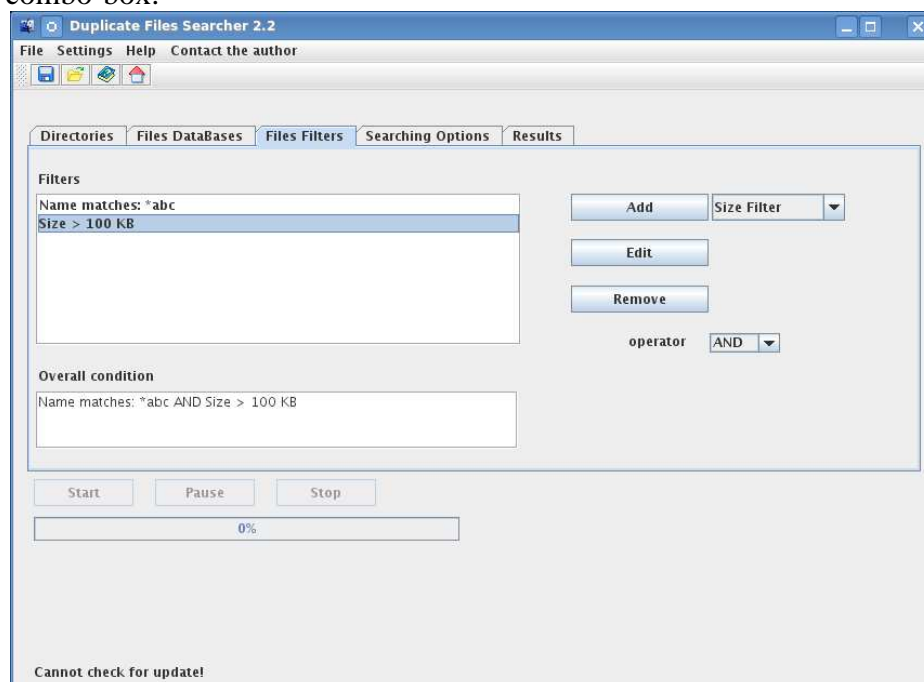
When the application is launched, it checks if the new version is available. Then you can go to menu “*Directories*” tab where you can add directories in which DFS will search for duplicate files.



Then you can go to “*Files Databases*” tab where you can add optional databases.



Next, one can add optional files filters. If you want to perform the search among specific files (e.g. image files or video files) you can add a filter that will filter out all files that do not meet the criteria. If you add two or more filters, the overall logic condition will appear in the white area below filters list. Subsequent filters are linked by a logic operator that can be set in the operator combo-box.



The program offers three types of filters:

- Name filter



This filter is used to filter files on the basis of their names. In the filter window you need to enter a pattern that all files need to match. It is possible to use standard wildcards: \* and ?. In addition, one can also set “Ignore Case” option to tell the filter that it should ignore letters case in the file name.

Examples:

pattern: \*.avi

The program will search only among files whose extension is “.avi”

pattern: ?.jpg

The program will search only among files whose extension is “.jpg” and whose name consists of one letter.

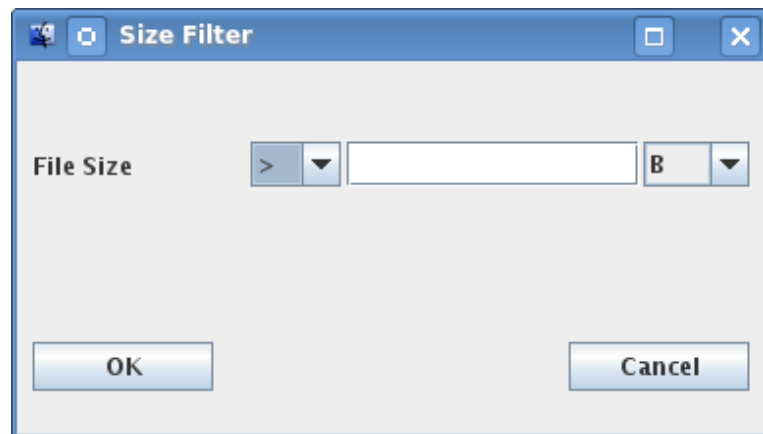
Pattern: a\*

Any name beginning with “a” (e.g. a, anew, afddre) will match the pattern.

Pattern: \*b\*

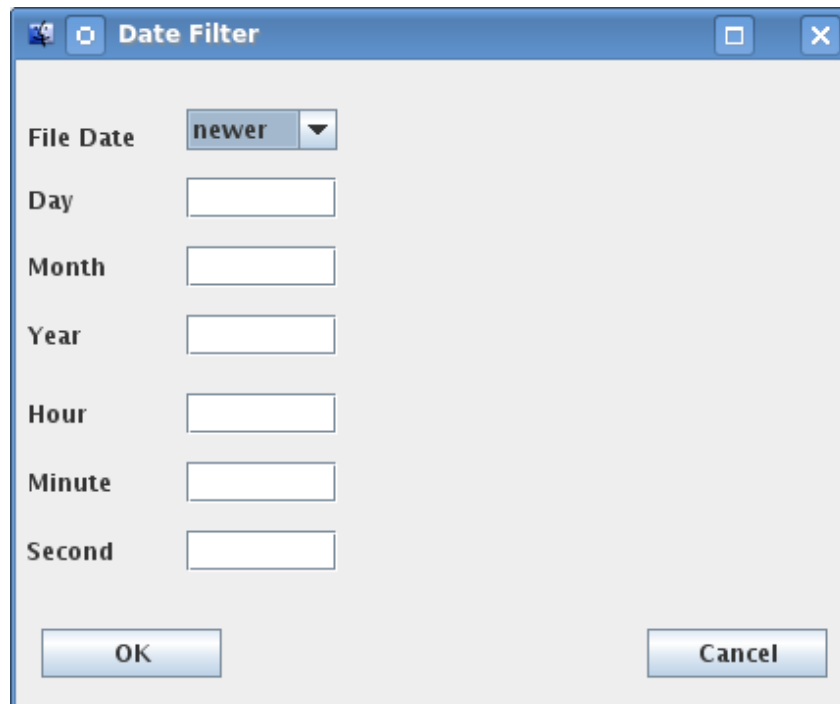
Any name containing “b” will match the pattern.

- Size filter



This filter makes it possible to filter files on the basis of their size.

- Date filter

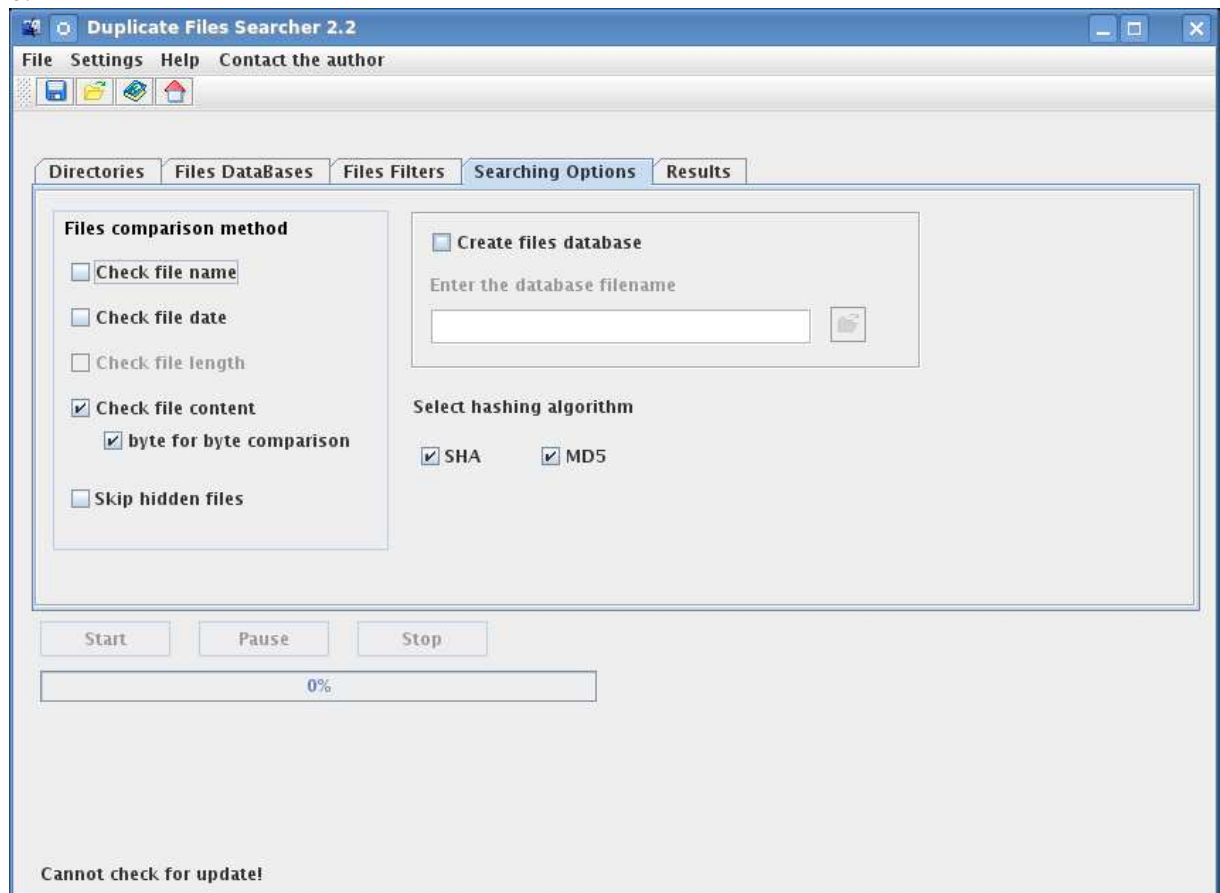


Date filter enables filtration on the basis of file date.


After that you should go to “*Searching options*” tab and adjust the settings.


First, select the appropriate files comparison method. Two or more files are found the same if they meet **all** selected criteria. If you select content comparison, you can choose hashing algorithms which will be used to determine if two files are identical. It is advised to choose both SHA and MD5 algorithm. In addition, you can select “*byte for byte scanning*” checkbox to enable files comparison based on byte after byte basis. This option ensures 100% accuracy and is highly recommended. Then you can decide if the application should create a

database file. If you chose to create a database file, it is recommended that it should have a meaningful name (e.g. CD1, Computer1, etc.) because this name will be later used results table.



Finally, press “*Start*” button to start searching process. When the process is finished, the application will create the file ***FilesProperties.htm*** in the same directory as ***dfsfull.jar***. The file contains information about all scanned files. The searching results will be displayed in “*Results*” tab.

One can save the content of the results table by clicking the  button.

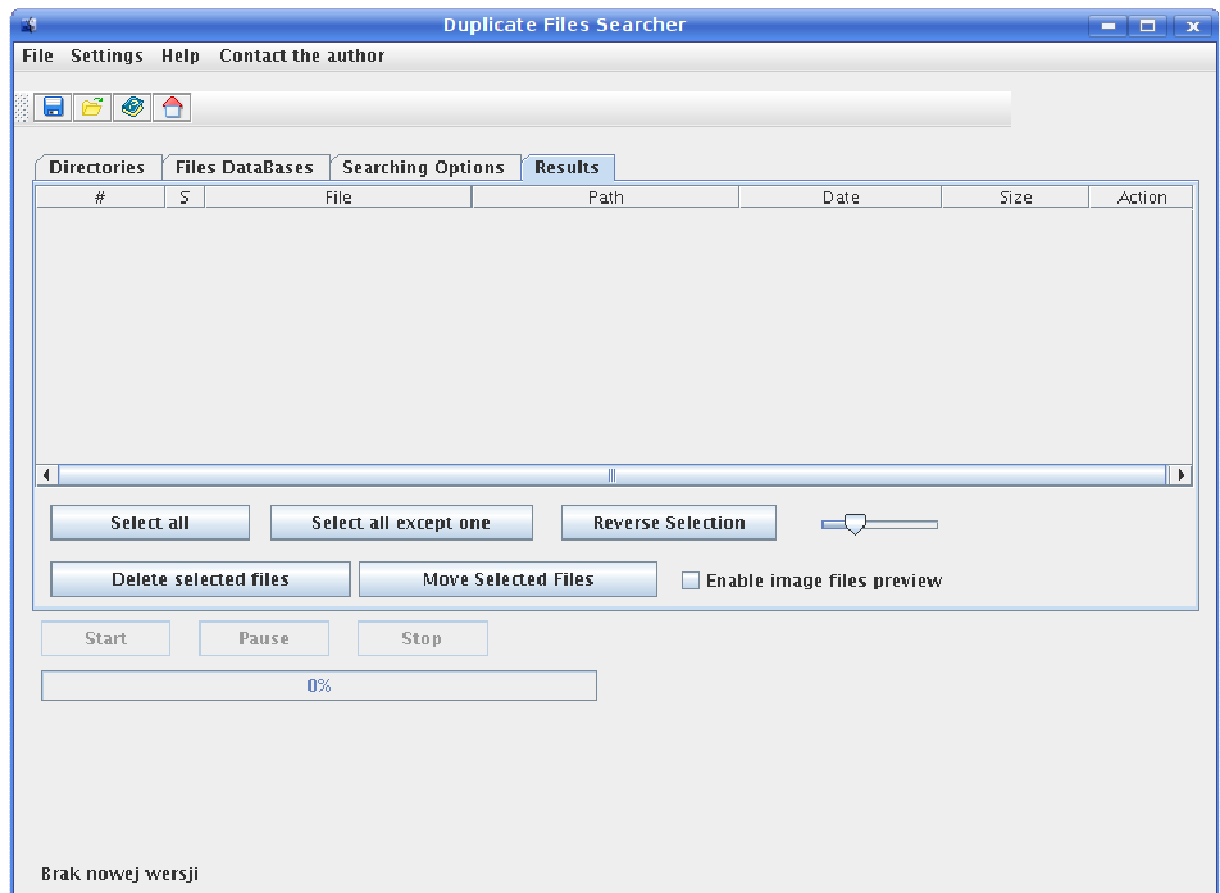
The results can be loaded by clicking  button.

Duplicate files are organized in groups. Each group contains files which were found the same. Click the appropriate row to select files for deletion. One can also use the following buttons:

- “*Select all*” – selects all files for deletion,
- “*Select all except one*” – selects all files in each group except one file,
- “*Invert Selection*” – reverses current selection.

If you double-click the appropriate row, the file will be opened in a default application (the feature is currently available on Windows platform only). If you select “*Enable image files preview*” then a click on a image file will open the preview window. The current DFS version supports the following formats: *jpg*, *gif*, *bmp*. After selecting files click “*Delete selected files*” to delete selected files or “*Move Selected Files*” to move the selected files to a chosen

directory. When deletion is over, the program will save **report.htm** that contains information about the action taken for each file.



## 5. What is the purpose of the databases files?

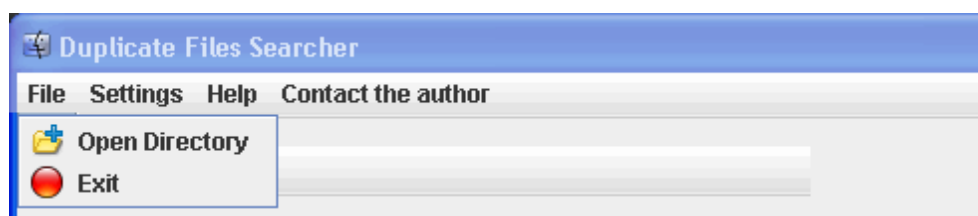
This functionality was designed to make it possible to search for duplicates not only within one computer but also among many computers or data sources.

## 6. How to use databases?

Suppose you have a collection of CD or DVD. Now you want to know if there are duplicates among files stored on these CDs. So, you put each of these CDs into CD drive and then create a database file for each CD. Finally, you add all previously created databases and the program will search for duplicates among all added databases (CDs).

## 7. Menu

### 7.1. File



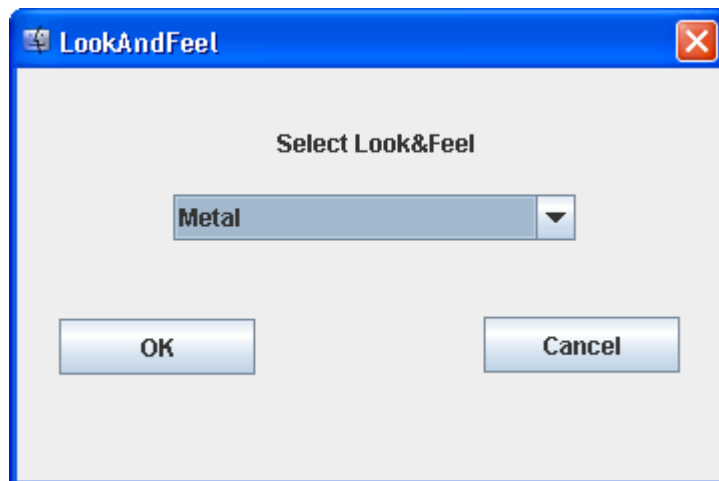
- Click “*Open directory*” to open the directory for duplicate files searching.
- Click “*Exit*” to exit the application.

## 7.2. Settings



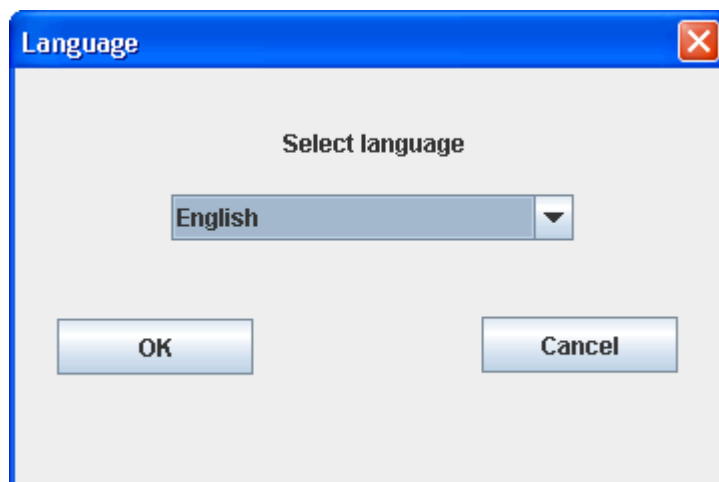
Go to menu “*Settings*” to adjust the program settings. The available options are:

- *Look&Feel*



The *Look&Feel* option makes you possible to choose the available Look&Feel.

- *Language*





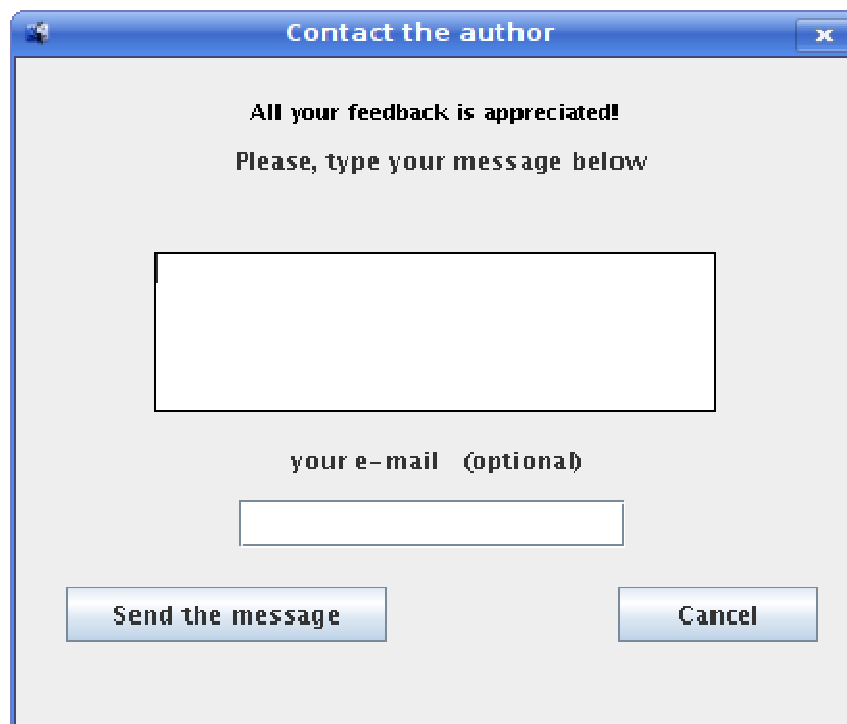
This option makes it possible to choose the application language.

### 7.3. Help

Menu “*Help*” displays information about current version.

### 7.4. Contact the author

The “*Contact the author*” option gives the user a possibility of sending a message to the author of the program in a straightforward manner.



## 8. Toolbar buttons



save results



load results



display program info window



visit program homepage

## 9. Future Development

All your feedback (comments, feature requests, bug reports, etc.) is welcome. If you would like to leave your feedback, go to <http://sourceforge.net/projects/dfr/> or use “*Contact the author*” option.

## 10. Project history

- Version 2.2  
Files filters added
- Version 2.1  
Russian translation added,  
Several minor bugs fixed
- Version 2.0  
Directory list added  
Databases added  
Saving and loading results added  
Font Size control added  
“*Contact the author*” window modified  
French translation added
- Version 1.9  
Internationalization added  
Searching animation added  
User interface enhancement  
“*Contact the author*” option added
- Version 1.8  
Byte for byte scanning added  
Enable preview image files checkbox added
- Version 1.7  
Manual files selection added  
New report files format
- Version 1.6  
“*Search subdirectories*” option added
- Version 1.5  
**deleted.htm** log file added  
some minor improvements
- Version 1.4  
User interface improvements
- Version 1.3  
**same.htm** log file added

- Version 1.2  
**hashes.txt** – log file added
- Version 1.1  
User interface improvements
- Version 1.0  
The first release of DFS