

# Twist

Flaming Pear Software

What it does

## What it does

How to install

Twist distorts images by smearing them around in a smooth or turbulent way.

Quick start

Controls

Things to Try

Other controls

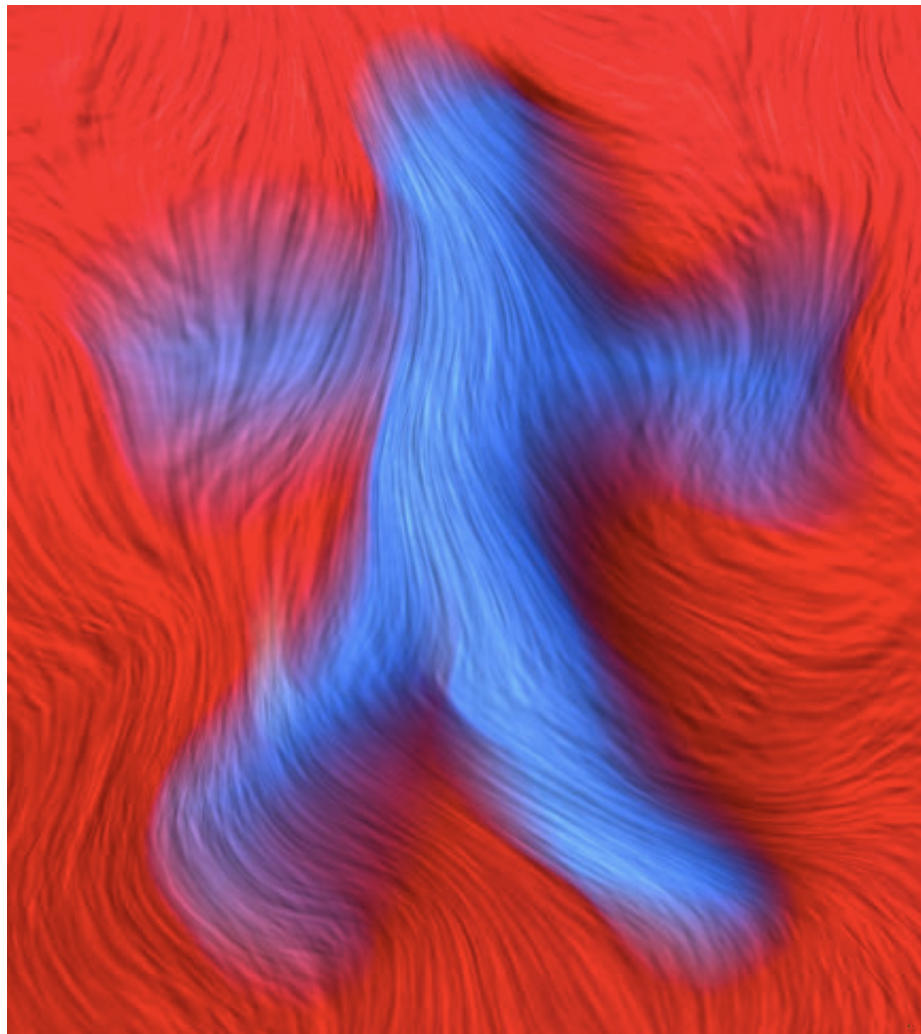
Memory dots

Hints

Versions

How to purchase

Questions



## How to install

Illustrated installation instructions are online at [www.flamingpear.com/faq.html](http://www.flamingpear.com/faq.html) .

To use this software, you need a paint program which accepts standard Photoshop 3.02 plugins.

Just put the plug-in filter into the folder where your paint program expects to find it. If you have Photoshop, the folder is Photoshop:Plugins:Filters or Photoshop:Plug-ins. You must restart Photoshop before it will notice the new plug-in. It will appear in the menus as Filters->Flaming Pear->Twist.

Most other paint programs follow a similar scheme.

If you have Paint Shop Pro: you have to create a new folder, put the plug-in filter into it, and then tell PSP to look there.

PSP 7:

Choose the menu File-> Preferences-> File Locations... and choose the Plug-in Filters tab. Use one of the "Browse" buttons to choose the folder that contains the plug-in.

The plug-in is now installed. To use it, open any image and select an area. From the menus, choose Effects->Plug-in Filters->Flaming Pear->Twist.

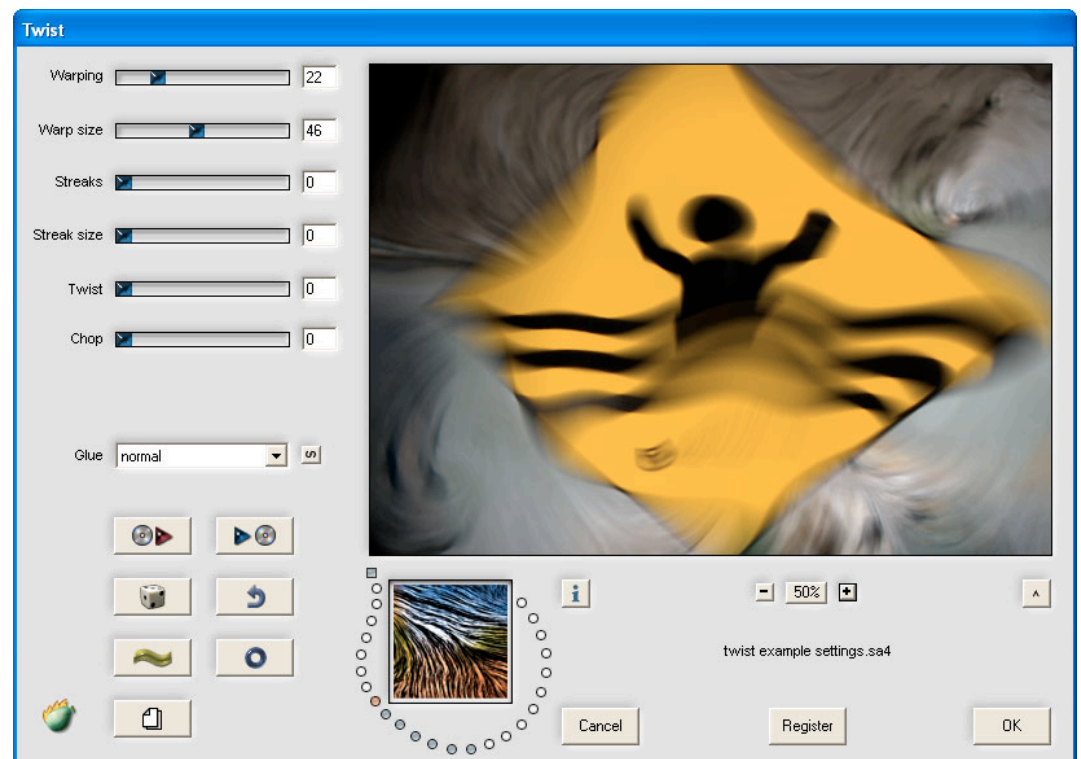
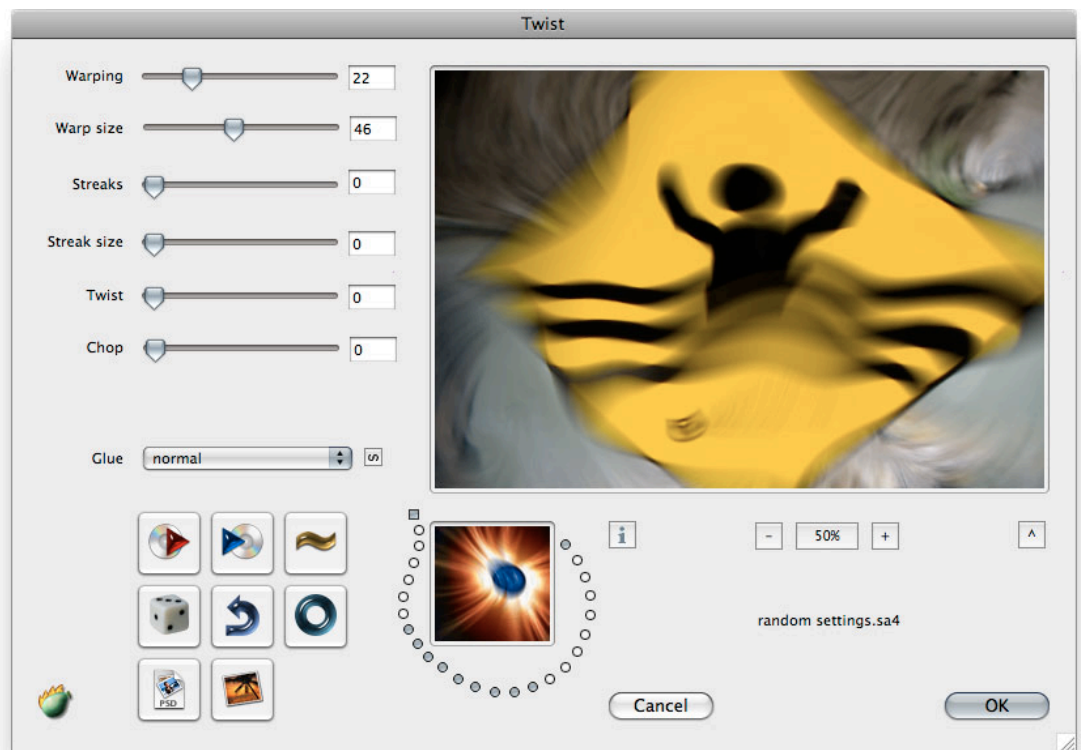
PSP 8, 9, X, XI, and X2:

Choose the menu File-> Preferences-> File Locations... In the dialog box that appears, choose Plug-ins from the list. Click "Add." If you are using PSP 8 or 9, click "Browse". Now choose the folder that contains the plug-in.

The plug-in is now installed. To use it, open any image and select an area. From the menus, choose Effects->Plugins->Flaming Pear->Twist.

## Quick start

When you invoke Twist, a dialog box will appear.



If you just want to see some effects quickly, click the dice button until you see something you like; then click OK.

Using the dice is the easiest way to use Twist. If you want to hand-tune your own effects, it helps to learn the controls, which are explained below.



dice

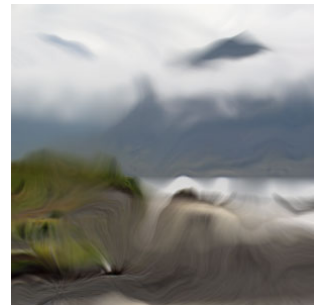
## Controls

Twist offers controls for warping, streaks, and adding extra distortion.

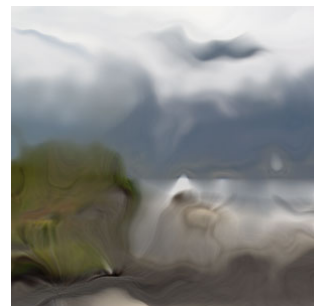
**Warping** is the strength of the distortion, ranging from 0 (no distortion) to 100 (maximum).



original image

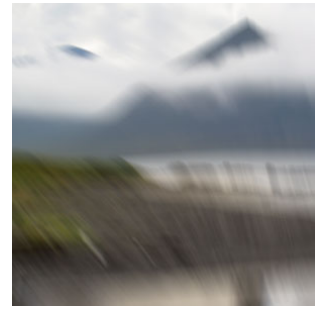


a basic effect



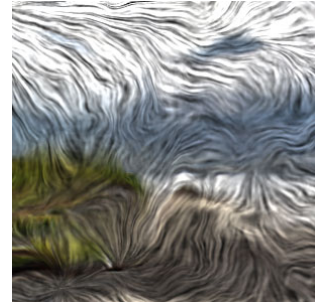
more warping

**Warp size** is the scale of the distortion features. Low values give many small wiggles, and high values give fewer, larger wiggles.



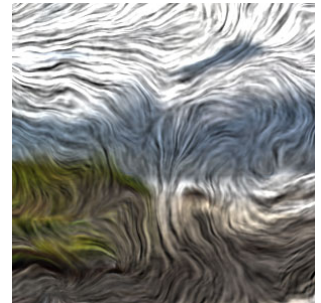
bigger warp size

**Streaks** adds fine lines to the image which run in the direction of the smearing.



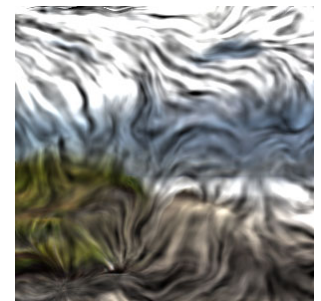
add streaks

**Twist** changes the angle of the smearing.



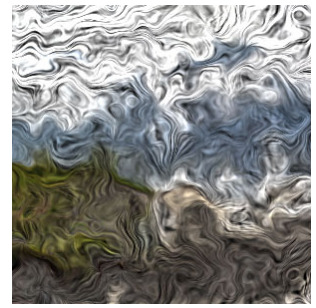
different twist

**Streak Size** lets you choose narrow or wide lines.



bigger streaks

**Chop** adds extra fractal variation to the smearing pattern.



with chop

## Things to try

Try loading the settings files that come with Twist to see what it can do, or click the dice until you see something you like.

Here are some example effects that you can do. Open a favorite picture for these examples -- you won't see anything if you start with a blank canvas. Select part of the picture, and invoke Twist.



original image

### Basic smearing

Use these settings:

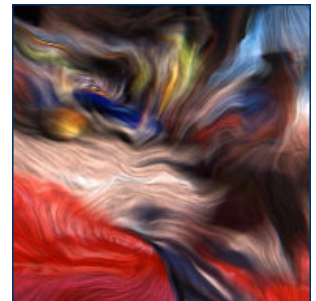
Warping 20

Warp size 50

Streaks 20

Streak size 20

Chop 65



original image

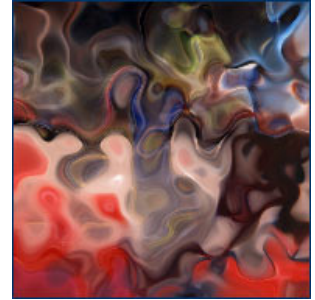
This is Twist's most typical effect. To get smoother curves, reduce Chop. Larger values give a more convoluted effect.



## Blobs

Use the same settings as for the first example, but increase Warping, decrease Warp size, and set Streaks to zero.

When Warp size is small, the individual distortion features in the picture become small too.



blobs

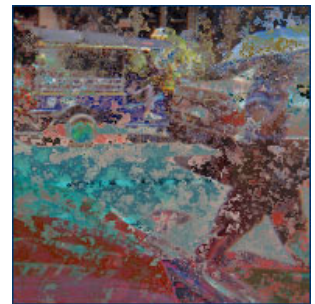
## Chemicals

To get this effect, you need three main ingredients:

- Very small Warp Size

- Very large Chop

- A Glue mode like "difference." The various glue modes can produce new colors not present in the original image.



chemicals

## Runny paint

Warping 12

Warp size 50

Streaks 50

Streak size 70

Chop 65

When Streak size is large compared to Warping, the streaks become blobs of light and dark.

Very small Streak size values produce a fine, feathery look.



runny paint

## Other controls

**Dice:** This randomizes the settings. Click it as much as you want to see different effects.



dice

**Reset:** Gives you the factory settings.



reset

**Glue:** Lets you combine the result image with the original, instead of replacing it. The **next-glue** button advances to the next glue mode.



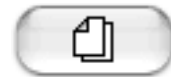
next glue

**Send to photo manager:** Sends the result to iPhoto (on Macintosh).



send to photo manager

**Export to PSD:** Renders the result to a .psd file.



export to PSD

**Make Gallery:** Builds a web page showing all the presets in a folder that you choose.



make gallery

**Plus, % and minus buttons:** If the selected image area is bigger than the preview, these buttons let you zoom in and out. Drag the preview to move it.

**Load preset:** Presets are files containing settings. To load one, click this button and browse for a preset file.



load preset

**Save preset:** When you make an effect you like, click this button to save the settings in a file.



save preset

**Undo** backs up one step.



undo

**Info:** briefly explains the controls.



info



Three more buttons:

**OK:** Applies the effect to your image.

**Cancel:** Dismisses the plug-in, and leaves the image unchanged.

**Register:** Allows you to type in a registration code and remove the time limit from the demo.

## Memory dots

Although you can [save your settings permanently to files](#), you can also stash settings in memory dots.

Click an empty dot to stash the current settings in it.

Click a full dot to retrieve its settings.

Hover the mouse over a dot to see what it contains.

Option-click to erase a dot on Macintosh.

Right-click to erase a dot on Windows.

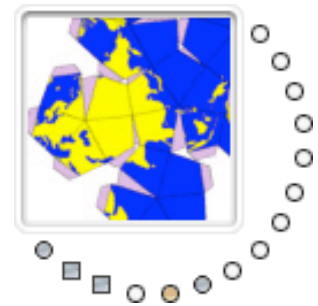
If a dot is orange, Twist's currently using that dot's settings.

Dots remember their contents until you erase them. If you'd rather make a temporary dot that forgets when you exit Twist, control-click it. Temporary dots are square.





When you start Twist, it puts the starting settings in a temporary dot. That way it's easy to start over without exiting the plug-in.

On Mac, you can drag-and-drop settings files from the central memory well.

You can build a web page showing how the current image would look with every memdot setting. Just option-click (Mac) or right-click (Windows) on the big memdot image.



memory dots

-  empty
-  full
-  current
-  temporary

## **Version history**

### **Version 1.8 December 2009**

64-bit version for Windows.

### **Version 1.7 June 2008**

The Twist effect now changes to suit the scale of the input image. Adds convenience features to the interface. The Mac version is faster on multicore machines and is resizable.

### **Version 1.6 June 2007**

Fixes a Macintosh problem where the plug-in could have bad settings or crash when installed on a machine for the first time.

### **Version 1.55 April 2007**

Universal binary for Macintosh. Works as a Smart Filter in Adobe Photoshop CS3 Macintosh. Fixes a Windows problem where the plug-in wouldn't remember its registration when it was installed in one user account but activated in another.

### **Version 1.4 July 2004**

Works in 16-bit color.

### **Version 1.3 December 2003**

Recordable as a Photoshop action.

### **Version 1.25 September 2003**

Adds more glue modes and the next-glue button.

**Version 1.22 February 2003**

Adds more glue modes and fixes a crash that could happen when using the menus under Windows XP.

**Version 1.21 December 2002**

Adds new glue modes: Color, Luminance, Linear Light, and Pin Light. Fixes the appearance of text in the interface when running under Mac OS X 10.2.3 .

**Version 1.2 February 2002**

Adds previews in the preset browser.

**Version 1.1 September 2001**

Adds an Undo button.

**Version 1.0 September 1999**

First release.

## How to purchase

You can place an order online [here](#). A secure server for transactions is available.

## Questions

The software, documentation, and supporting materials are made by Flaming Pear Software. Answers to common technical questions appear on our [support page](#), and free updates appear periodically on the [download page](#).

Trouble with your order? Orders are handled by [Kagi](#); please contact them at [admin@kagi.com](mailto:admin@kagi.com) .

For bug reports and technical questions about the software, please write to [support@flamingpear.com](mailto:support@flamingpear.com) .

©2009 Flaming Pear Software